



***Texas
Department
of Transportation***

INTRODUCTION TO VERSION 5.2.4

August 2006

TABLE OF CONTENTS
Registration and Title System Version 5.2.4
August 2006

I	CONVERSION TO NEW STICKER RECEIPT FORM PROCESS	
	• Counties without RSPS Subcontractors and/or Dealers (DTA)---	3
	• Counties with RSPS Subcontractors and/or Dealers (DTA)-----	3
II	DISKETTE SECURITY FEATURE	
	• Security-----	4
III	NEW ERROR SCREENS	
	• Refresh Error Screen-----	4
	• DTA Recovery Screen-----	4
	• Invalid Start Date Screen-----	5
	• RSPS Wireless Printer Screen-----	5
IV	ADMIN TABLE CHANGES	
	• New Registration Plate Codes-----	6
	• New Token Trailer Plate Pattern-----	6
	• Purple Heart Recipient/Former Prisoner of War Plates (Fee)-----	6
	• RSPS Admin Table Update-----	6
V	VERSION 5.2.4 ACTIVITY CHANGES FOR COUNTIES	
	• Table-----	7
VI	VERSION 5.2.4 ACTIVITY CHANGES FOR HEADQUARTERS/REGIONS	
	• Table-----	8

INTRODUCTION TO VERSION 5.2.4

Conversion to New Sticker Receipt Form

Process for Counties without RSPS Subcontractors and/or Dealers (DTA)

Counties who do not have RSPS Subcontractors or Dealers will see no change to inventory or processing procedures. There are no RTS screen changes. After receiving the new sticker receipt forms, please take the following actions to complete the conversion process:

Step	Action
1	The Main Office for each county should Call the Systems Services Help Desk (previously the RTS Help Desk) to request to be converted to the new Sticker Receipt Form version.
2	The Systems Services Help Desk will conduct an overnight reboot of each RTS workstation which will activate the new Sticker Receipt Form version so that it will be available the next morning.
3	The County, Main Office and Substations should load printers with the <u>new</u> Sticker Receipt Forms.

Process for Counties with RSPS Subcontractors and/or Dealers (DTA)

After receiving the new sticker receipt forms and printing the remainder of the old forms, please take the following actions to complete the conversion process:

Step	Action
1	Prepare each flashdrive with the RTS Version 5.2.4. After this preparation the flashdrive will contain RSPS Version 1.2.0. There is no change to the flashdrive update process.
2	Deliver a supply of the new Sticker Receipt Forms and a flashdrive to Dealers and Subcontractors and pickup all existing work (Subcontractors will need to export all current data before updating the laptop using the flashdrive).
3	Process all Dealer and Subcontractor transactions containing the old Sticker Receipt Form into the RTS. This must be done prior to being able to print the new sticker receipt forms in tax offices.
4	The County may request to be converted to the new Sticker Receipt Form version when all Substations and the Main Office have completed existing transactions and a sustainable supply of the new Sticker Receipt Forms is on hand.
5	Call the Systems Services Help Desk (previously the RTS Help Desk) to request to be converted to the new Sticker Receipt Form version.
6	The Systems Services Help Desk will activate 5.2.4 for each county and the automatic overnight reboot of RTS workstations will activate the new Sticker Receipt Form version so that it will be available the next morning.
7	The County, Main Office and Substations should load new Sticker Receipt Forms in all printers.

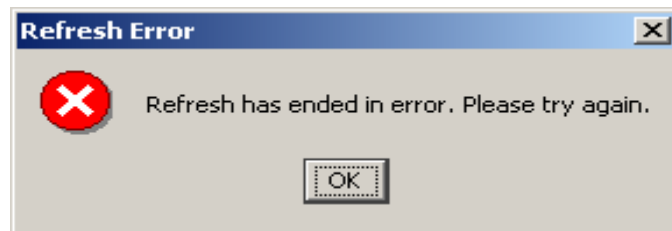
Security

Behind the scenes, a subcontractor diskette encryption process will take place allowing improved security. Diskettes sent to the Main Office for processing are encrypted (coded) to secure the information they contain. When the diskettes are entered into a RTS workstation the information is decrypted (translated).

New Error Screens

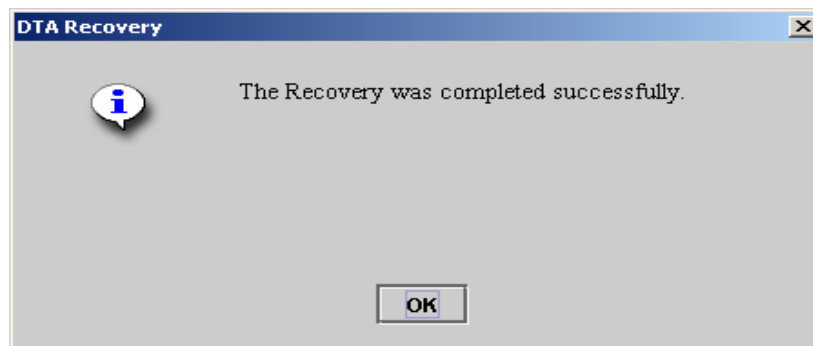
Refresh Error Screen

When an error occurs during the “Refresh” of a laptop the following error message will display “Refresh has ended in error. Please try again.” This will allow the user to try again. If the error is received a second time, it should be reported to **Systems Services Help Desk**.



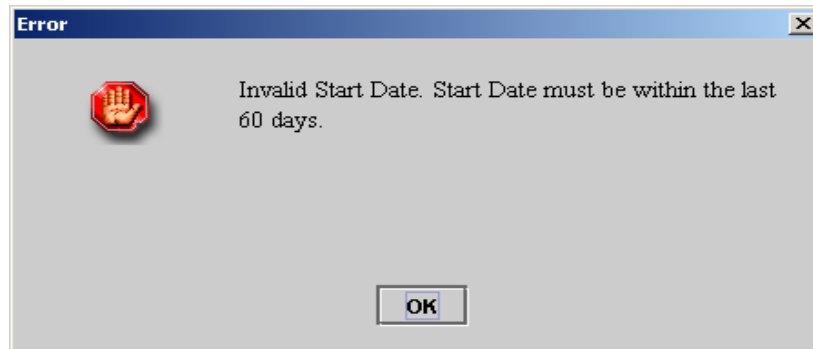
DTA Recovery Screen

Previously, after selecting the diskette number and depressing the Enter key on the **Dealer Diskette Contents** screen **DTA007**, the system returned to the DTA007 screen with no confirmation of a successful completion. With RSPS Version 1.2.0, a **DTA Recovery** screen has been added stating “The Recovery was completed successfully.” A report is produced and the system returns to the Main Menu.



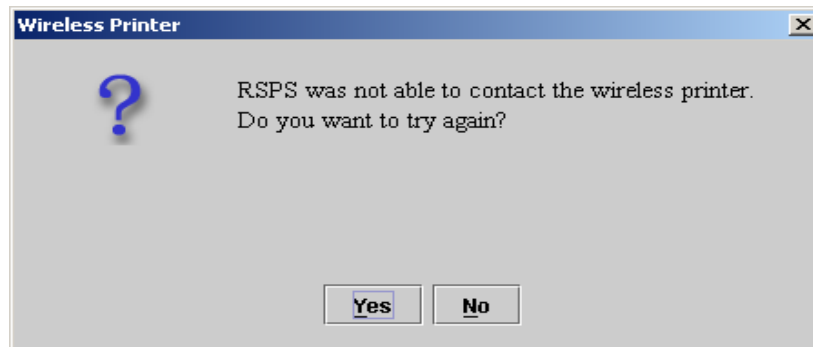
Invalid Start Date Screen

On **Subcontractor Reports**, when the start date is more than 60 days prior to the current date, the message now reads, "Invalid Start Date. Start Date must be within the last 60 days."



RSPS Wireless Printer Screen

Previously, the user would attempt to send a transaction to the printer and it would appear that the application processed but no receipt printed. The user will have the option to try again by selecting either Yes or No.



Admin Table Changes

New Registration Plate Codes

The following table lists new Item Codes now available in the POS Admin Tables.

NEW REG PLT CODE	NEW REG CLASS CODE	ITEM CODE DESCRIPTION	PATTERN	INTENDED USE
DPFTP	15	DISABLED PERSONS FARM TRUCK PLT	1BBBB – 9ZZZZ	Display on farm truck owned by disabled person
DPTKP	36	DISABLED PERSONS TRUCK-MORE THAN 1 TON	1BBBB 9ZZZZ	Display on truck with tonnage > 1 ton owned by disabled person
DPFTP	43	DISABLED PERSONS FARM TRUCK PLT-MORE THAN 1 TON	1BBBB 9ZZZZ	Display on farm truck with tonnage > 1 ton owned by disabled person
DRPTRL	77	DISASTER RELIEF TRAILER PLT	12D001 – 99D999	Display on “disaster relief” trailer
SCPTRL	32	SOIL CONSERVATION TRLR PLT	12S001 – 99S999	Display on “soil conservation” trailer
WLDLFTRL	37	WILDLIFE TRAILER PLT	BB01B – ZZ99Z B01BB – Z99ZZ	Display on trailer; Large-Mouth Bass plate only
PLPWLDTRL	37	PER WILDLIFE TRAILER PLT	NA	Display on trailer; Large-Mouth Bass plate only

New Token Trailer Plate Pattern

New Token Trailer Plate pattern 00001C – 09999C was added to the admin tables.

Purple Heart Recipient Plate and Former Prisoner of War Plate (Fee)

These military specialty plates now allow a registration class code of 36 for trucks more than 1 ton.

RSPS Admin Table Update

Item codes in the **RSPS Admin Tables** have been updated to correspond with those available in the POS Admin Tables.

VERSION 5.2.4 ACTIVITY CHANGES FOR COUNTIES

PRIMARY EVENT SELECTION	SECONDARY EVENT SELECTION	ACTIVITY DESCRIPTION	STATUS
REMOTE STICKER PRINTING SYSTEM -RSPS-	Date Range	Problem: When RSPS was set up as either Subcontractor or Dealer and the Reports icon was selected on the Report Selection screen DTA005, "From" and "To" were only enabled when the Specify Date/Time Range radio button was selected.	Fix completed: The "From" and "To" text labels on the Report Selection screen DTA005 and Select Report Range screen SUB005 are now disabled when a date range is not selected for both Subcontractor or Dealer .
	Dealer Title Application	Problem: On the Print Management screen DTA002, the Print Selected button was enabled even if there were no stickers available to print.	Fix completed: If there are no stickers available to print, the Print Selected button will be disabled.
	Dealer Title Reports	Problem: User group 'User' should not be able to select DTA reports by 'Specify Date Range'. The radio button and input fields for 'Specify Date Range' should be disabled.	Fix completed: The 'User' group is no longer able to run DTA reports by using the 'Specify Date Range' fields.
	Dealer Transaction Date	Problem: When the Dealer Transaction Date (DlrTransDate) is missing on a diskette, RSPS can apply the current date.	Fix completed: The dealer must enter a valid Dealer Transaction Date.
	Hot Keys For User Selection	Problem: Previously, RSPS Hot Keys were undefined.	Fix completed: Hot Keys have been defined and assigned. Notice underlined letters beside checkboxes and on buttons. Select ALT + the underlined letter.
	Print Management Scroll Bar	Problem: When a diskette was entered with 25 transactions, a scroll bar unnecessarily appeared on the Print Management screen DTA002.	Fix completed: Twenty-five transactions will fit on the Print Management screen DTA002 without the scroll bar displaying.

RSPS cont'd...	Recycling Diskette Sequence Number	Problem: Previously, DTA and Subcontractor disk sequence numbers did not allow a maximum of 9,999.	Fix completed: Disk sequence numbers for both DTA and Subcontractor will reset back to 1 after reaching 9,999.
	Renewal Receipt Header Format	Problem: The renewal receipt header did not allow room to print a full-length Plate Type description on the Sticker Receipt Form.	Fix completed: Information in the header was moved to the right allowing header items an additional six characters with room to print the full-length Plate Type description on the Sticker Receipt Form.
	User Administration COM004	Problem: When returning from Modify or Delete after the user has selected and then declined an option to Modify or Delete, the cursor focus was not returning to the top of the listbox.	Fix completed: The cursor focus will now return to the top of the listbox with the first row selected.
	User Administration /User Properties COM005	Problem: The Middle Initial field did not allow numbers.	Fix completed: The Middle Initial field will now allow numbers as well as letters.

VERSION 5.2.4 ACTIVITY CHANGES FOR HEADQUARTERS/REGIONS

PRIMARY EVENT SELECTION	SECONDARY EVENT SELECTION	ACTIVITY DESCRIPTION	STATUS
<u>CUSTOMER</u> Title / Registration	CCO Regional Offices	Problem: CCO did not set initial focus to 'Fees to charge' field. The user was required to tab once before going to the fees field.	Fix completed: On CCO screen TTL018, focus will initially be placed in the fees input field unless there are more than three indicators in the indicator box. In the latter case, focus will be on the indicator list box.
<u>ADMIN TABLES</u>	New Additions	Problem: The item code IRP Fees Texas was not available.	Fix completed: The item code IRP Fees Texas has been added to Regional Collections.
		Problem: The Per Dealer plate and Per Dealer Motorcycle plate item codes were not available.	Fix completed: The Per Dealer plate and Per Dealer Motorcycle plate item codes have been added for the manufacture of these plates only.

