



INTRODUCTION TO VERSION 5.2.3

July 2006

**TABLE OF CONTENTS**  
**Registration and Title System Version 5.2.3**  
July 2006

<b>I</b>	<b>STARTING THE RTS APPLICATION</b>	
	• Main Menu-----	3
	• RTS Refresh Screens-----	3
	• Progress Bar-----	4
	• Splash Screen-----	5
<b>II</b>	<b>RSPS STATUS UPDATE PROCESS</b>	
	• Screens-----	6
<b>III</b>	<b>CHANGES TO THE RTS APPLICATION</b>	
	• On Screen Print-----	8
	• Hot Keys-----	8
	• Reprint Reports-----	9
	• Tab Key-----	9
	• Internet County Processing-----	10
<b>IV</b>	<b>MENU AND REPORT TITLE CHANGES</b>	
	• Verbiage Use Changes-----	11
	• Report Name Changes-----	11
	• New and Obsolete Reports-----	12
<b>V</b>	<b>ACTIVITY CHANGES</b>	
	• County Defects Table-----	13
	• Headquarters and Regional Office Defects Table-----	22

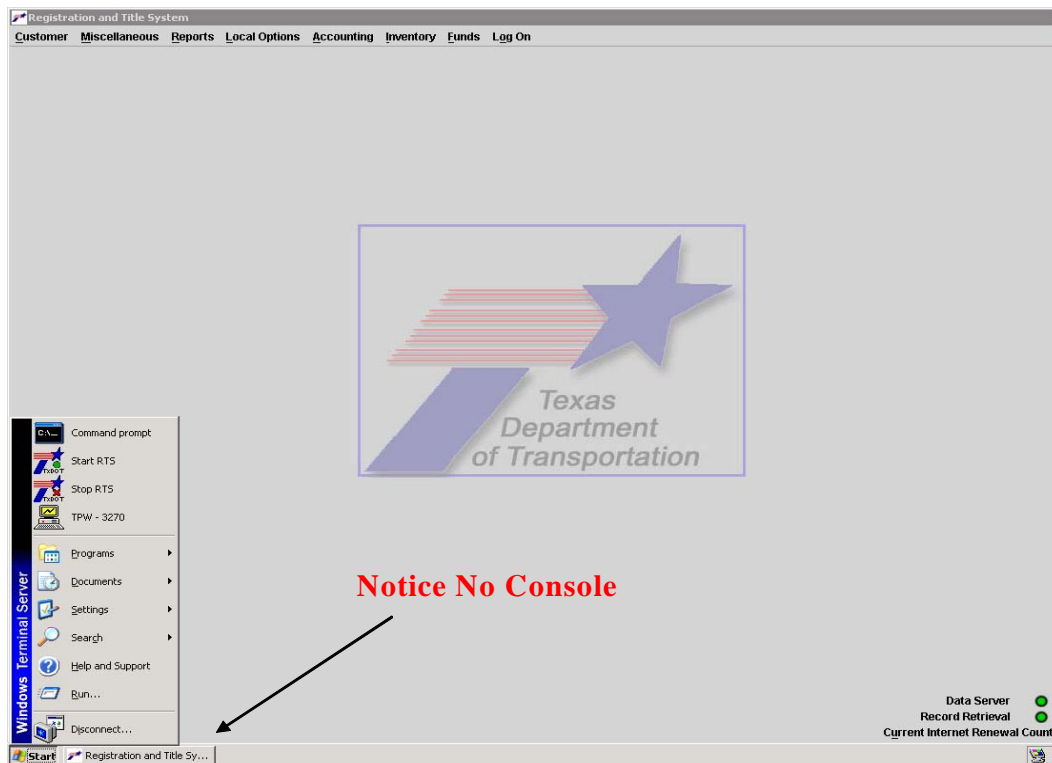
## INTRODUCTION TO VERSION 5.2.3

The JAVA 1.4 update to the Registration and Title System (RTS) application provides more current programming standards. The user will observe visual changes, tabbing changes, and a more mouse-driven application.

### Starting the RTS Application

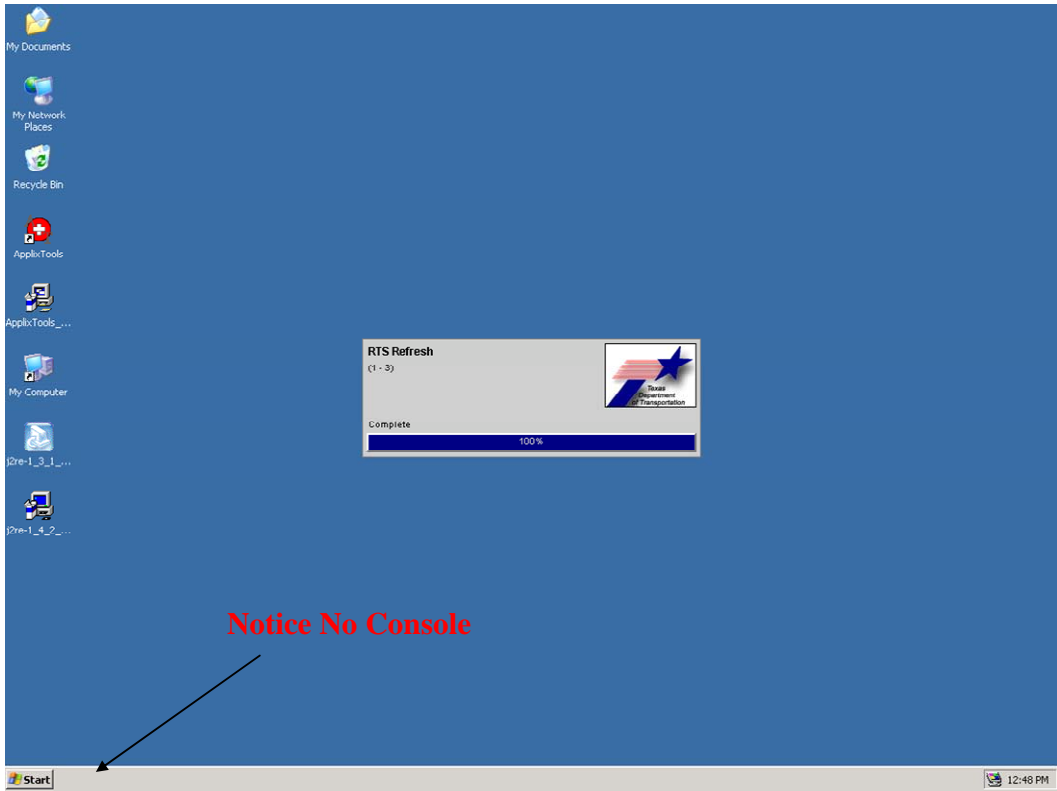
#### Main Menu

On the **Main Menu** screen, when the Ctrl + Esc keys are selected, notice the black box containing "c:\RTS" on the Task Bar is no longer visible. This space contained the refresh console, which the user will no longer see when starting the RTS application.

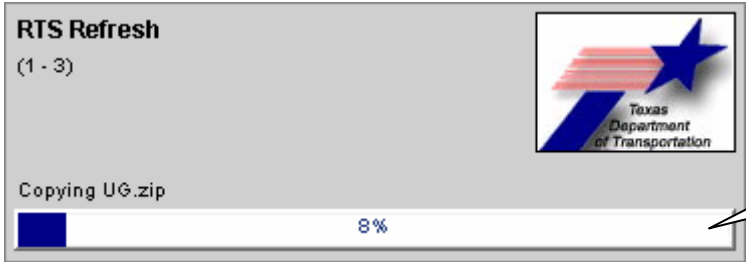


#### RTS Refresh Screens

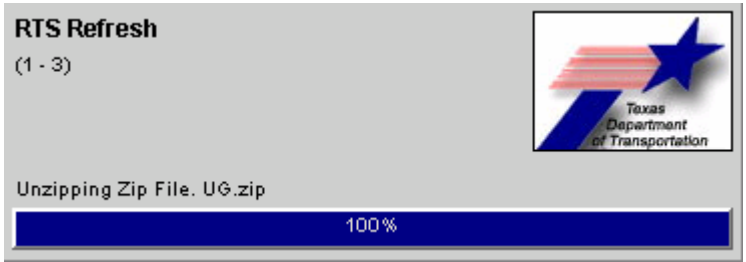
Since there is no longer a console (black box) appearing and minimizing during startup, the initial RTS Refresh process is visible, signaling the user that the application is starting. Initially, RTS Refresh may take a few minutes to appear, please be patient. When refresh begins, each refresh file features a series of screens containing a **Progress Bar** showing the status of Refresh as illustrated in the following screens. The RTS Refresh screens should only be visible when the users Stop / Restart RTS.



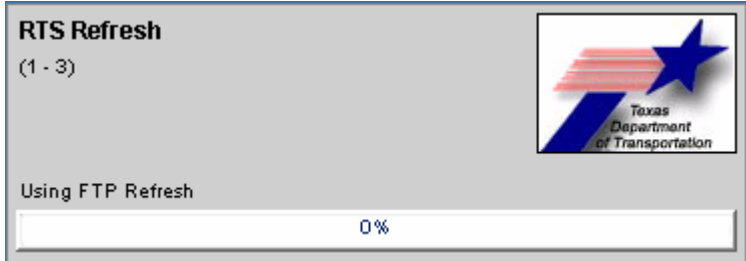
### RTS Refresh



Progress Bar with descriptive titles




### RTS Refresh FTP Mode



## RTS Cache Refresh

**RTS Cache Refresh**  
(2 - 3)




Finishing Up Refresh

57%

## RSPS Refresh

**RSPS Refresh - Comm to County**  
(3 - 3)

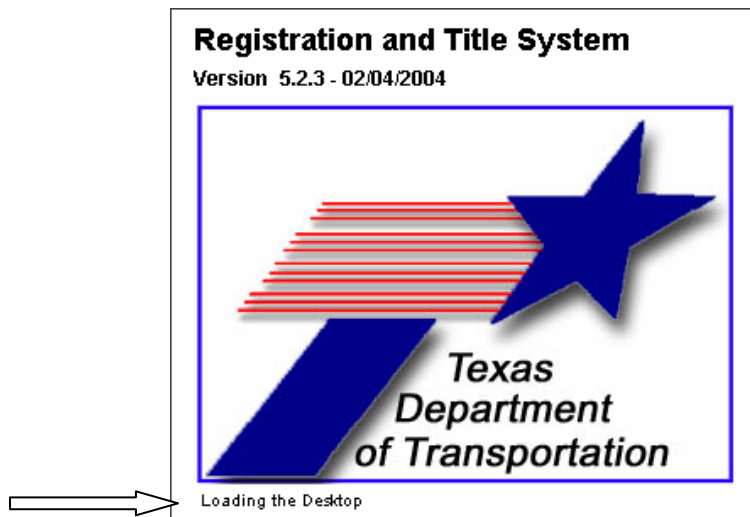


Complete

100%

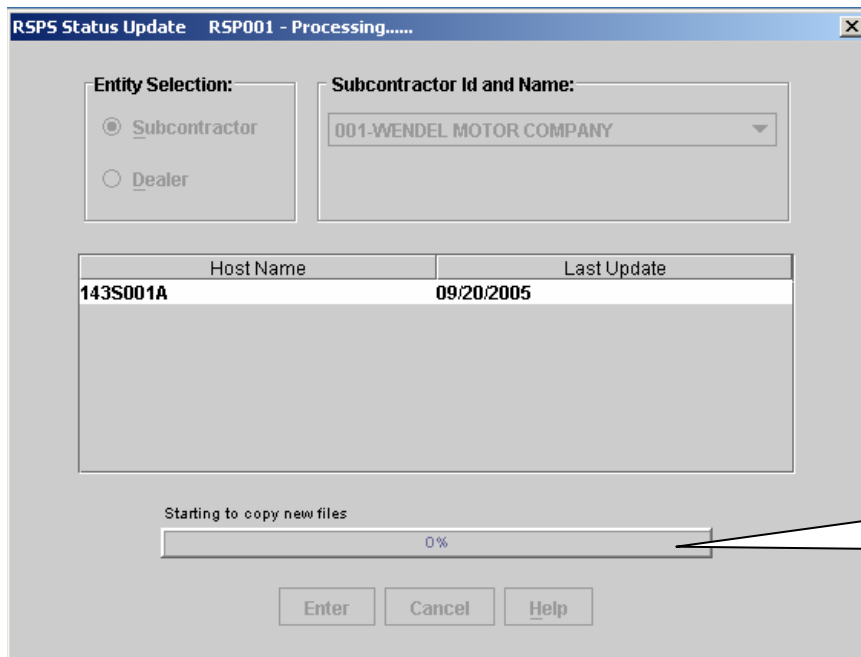
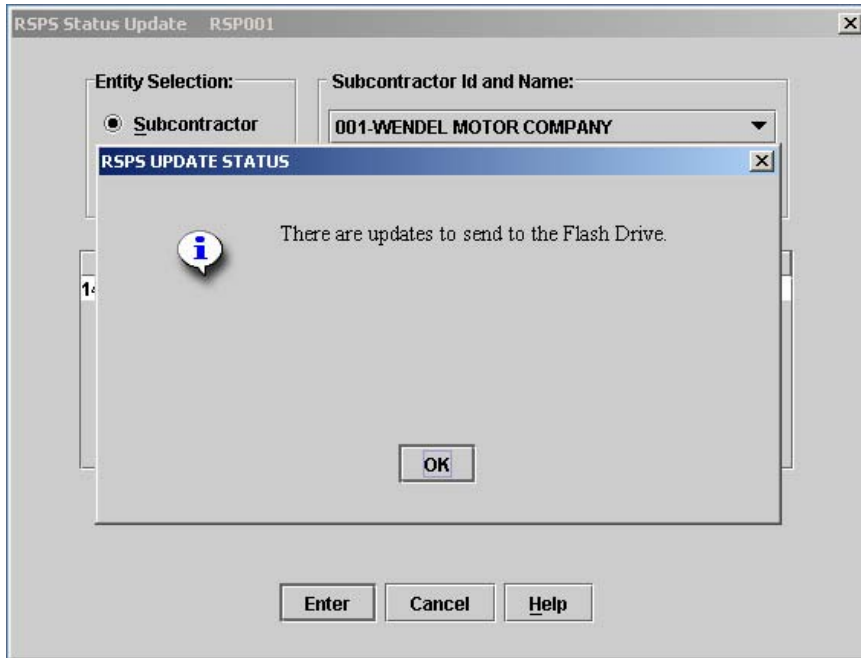
## Splash Screen

Once the RTS Refresh process is completed, a series of Splash screens appear. These screens notify the user that the desktop is loading and displays the following descriptive titles: Loading Cache, Starting Send Cache and Loading the Desktop. After the desktop is loaded, the Splash screen disappears and the Disclaimer screen appears.



## RSPS Status Update Process

The following screens show the RSPS Status Update process, from notification of updates ready to be sent to the Flash Drive to the completion of the automatic flash drive update.



Notice that the design of the Progress Bar has changed, although the functionality has not changed.

RSPS Status Update RSP001 - Processing.....

**Entity Selection:**  
 Subcontractor  
 Dealer

**Subcontractor Id and Name:**  
001-WENDEL MOTOR COMPANY


Host Name	Last Update
143S001A	09/27/2005

Copying ITEM\_CODES\_3\_1\_05.csv  
10%

Enter Cancel Help

RSPS Status Update RSP001

**RSPS UPDATE STATUS**

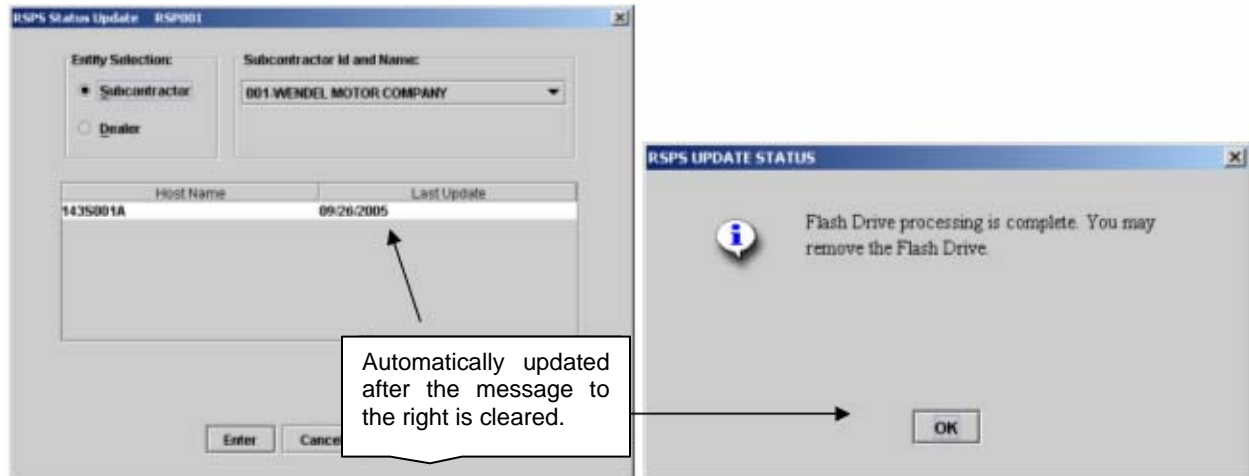
 Flash Drive processing is complete. You may remove the Flash Drive.

OK

Complete  
100%

Enter Cancel Help

If an update is performed on the **RSPS Status Update** screen (RSP001), the user will see the results immediately after clearing the message informing them that refresh is complete.



## Changes to the RTS Application

The following changes to the RTS application occur because of the update to JAVA 1.4.

- **On Screen Print:** The RTS application print is changed from blue to bold black, making information easier to read on screen.

The screenshot shows the 'Registration' window (REG003) with the following data:

Registration:	
Plate:	Age: 0
Expires:	5 / 2005
Class:	FARM TRK-LESS/EQL 1 TON
Type:	FARM TRUCK PLT
County:	161 MCLENNAN

Vehicle:	
2001 TOYT PK	
Body VIN:	
Class:	TRK<=1
Odometer:	17243 Tons: 0.50
Trlr Type:	Length:

Weight:	
Empty:	2600
Capacity:	1000
Gross:	3600

Owner:	
Id:	DAVID [REDACTED]

Document:	
Document No:	16130836939124204
Issued:	12/27/2003
REGULAR TITLE	

RELEASE OF PERSONAL INFO RESTRICTED	
ACTUAL MILEAGE	
CCO ISSUED: [07/26/2001]	

Select if needed:

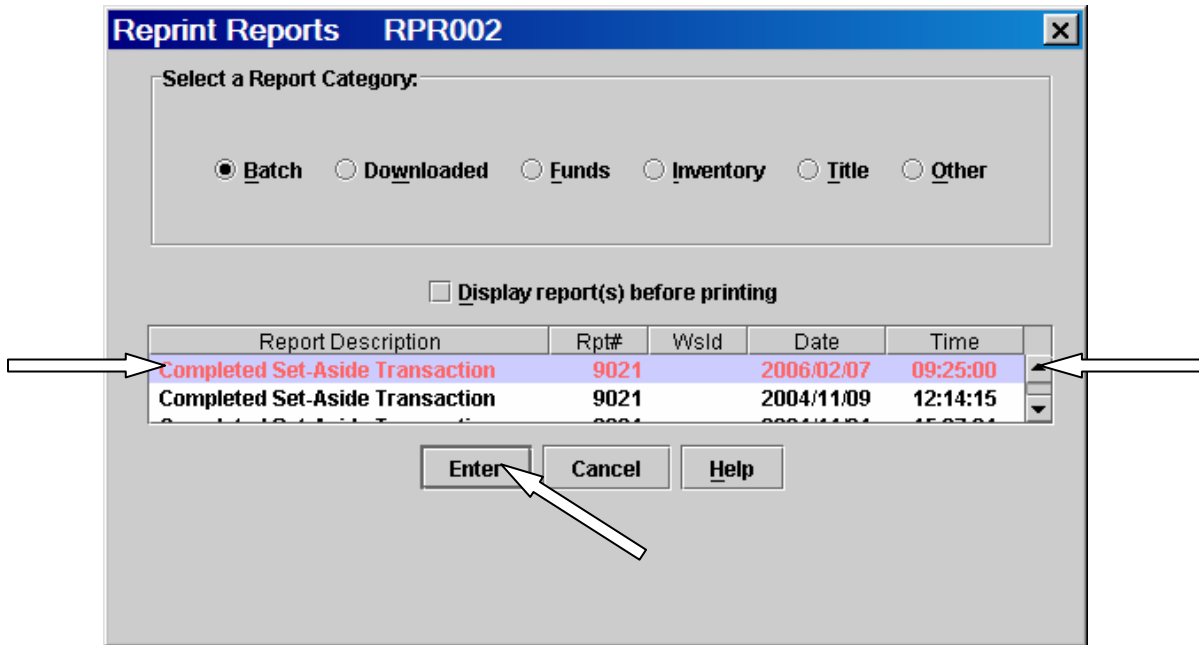
- Lien(s)
- Owner Address
- Additional Information

Buttons: Enter, Cancel, Help

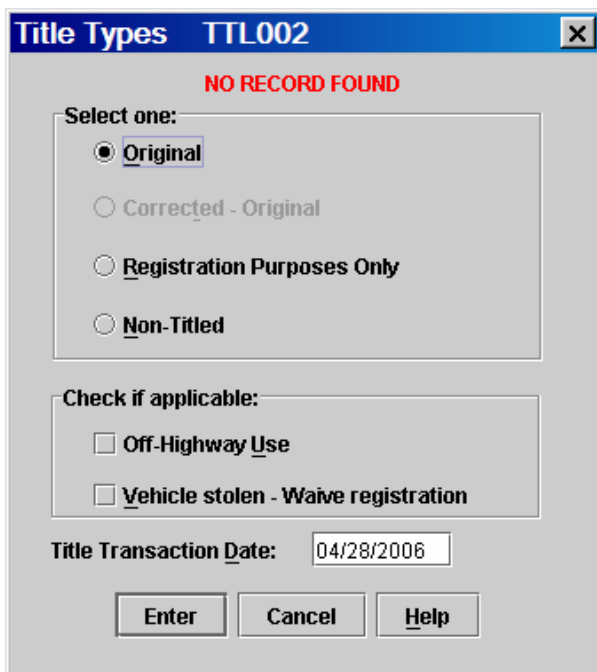
- **Hot Keys:** Using a Hot Key selection moves the user through the RTS application at a more rapid pace than before.



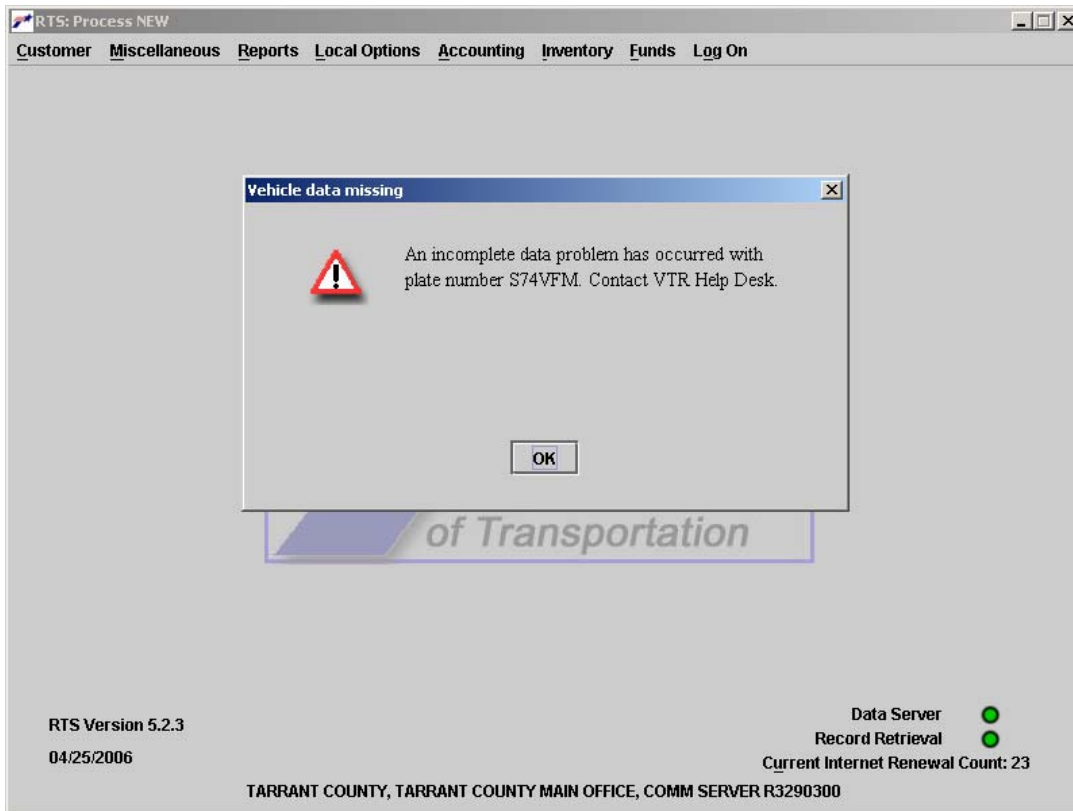
- **Reprint Reports:** On the following screen, when the Tab key is depressed to move off a highlighted selection in the report description box, the cursor moves to the Scroll Bar before moving to the ENTER key. This change is found on any screen with a scroll bar throughout the application, except the Hot Check Credit, Hot Check Redeemed, Deduct Hot Check and Refund events. The user can tab twice or use the mouse. Note: The Arrow (< >) keys now navigate the radio buttons on the Reprint Reports screen (RPR002).



- **Tab Key:** The Tab key will move the cursor through all choices on screens having a select box with multiple radio buttons, although the spacebar must be depressed to make a selection.



- **Internet County Processing:** Occasionally, internet records were not processed by the county until after the internet data record was purged, which did not allow the county to approve the internet registration renewal. Now the user immediately receives the error message Vehicle Data Missing “An incomplete data problem has occurred with plate number XXXXXX. Contact VTR Help Desk.” The user may press the Enter key to complete other transactions.



- **Tab and Shift + Tab Keys:** The Tab and Shift + Tab keys now follow the tabbing standard for JAVA 1.4 and move the cursor through all related fields.

## Menu and Reports Name Changes

The RTS application has been updated to provide consistent verbiage regarding the Closeout, Closeout Statistics, Set-Aside, Publishing and Substation Summary and Countywide Menu Items, Frame Titles, and Report Titles.

### **VERBIAGE USE CHANGES**

<b>TITLE</b>	<b>APPLICABLE USE AREA</b>
<b>Countywide</b>	All Areas
<b>Closeout</b>	<ul style="list-style-type: none"> <li>• Report Type on Funds Reports</li> <li>• Range Specification for Funds Reports</li> </ul>
<b>Close Out</b>	<ul style="list-style-type: none"> <li>• Desktop Menu Items</li> <li>• Screens following "Close Out for the Day"</li> </ul>
<b>Set-Aside</b>	Report Title
<b>Set Aside</b>	Pending Transaction Screen

The following reports have been changed, obsolete reports have been deleted and a new report added to the system.

### **REPORT NAME CHANGES**

<b>NO.</b>	<b>OLD REPORT NAME</b>	<b>NEW REPORT NAME</b>
5213	Close Out	<b>Closeout</b>
5201	Close Out Statistics	<b>Closeout Statistics</b>
9021	Completed Set Aside Trans	<b>Completed Set-Aside Transaction</b>
5901	County Wide Batch Reports	<b>Countywide Batch</b>
5901	Countywide Online Reports	<b>Countywide Online</b>
4013	Dealer List	<b>Dealer</b>
2171	Completed Dealer	<b>Dealer Completed</b>
2151	Preliminary Dealer	<b>Dealer Preliminary</b>
9901	Inventory Online Action	<b>Inventory Action Online</b>
3001	Inventory Delete	<b>Inventory Deleted</b>
7402	IRP Transmittal	<b>IRP Transmittal Invoice</b>
4011	Lienholders	<b>Lienholder</b>
4802	Sales Tax	<b>Monthly Funds</b>
5211	Payment Type Report	<b>Payment Type</b>
9021	Publishing Report	<b>Publishing</b>
2001	Renewal Recipient Addr Change	<b>Renewal Recipient Address Change</b>
5251	Reprint Sticker Report	<b>Reprint Sticker</b>
5061	Sales Tax Allocation Report	<b>Sales Tax Allocation</b>
	Itrnt Special Plate Addr Chg	<b>Special Plate Address Change</b>
2161	Sticker / Receipt Report	<b>Sticker / Receipt</b>
4012	Subcontractor List	<b>Subcontractor</b>
2011	Subcontractor Renewal	<b>Subcontractor Renewal - Final</b>
5921	Substation Summary Batch Rpts	<b>Substation Summary Batch</b>
5921	Substation Summary Online Rpts	<b>Substation Summary Online</b>
5921	Substation Payment Report	<b>Substation Summary Payment Report</b>
5911	On-Line Title Package	<b>Title Package Online</b>
2003	Itrnt Vendor Elec Pymnt Trans	<b>Vendor Payment</b>
9001	Void Transaction	<b>Void</b>

## NEW AND OBSOLETE REPORTS

<b>NO.</b>	<b>REPORT NAME</b>	<b>CHANGE</b>
<b>2011</b>	<b>Subcontractor Renewal – Draft</b>	<b>New Report</b>
	Batch Inventory History Report	Report Deleted
	Batch Status	Report Deleted
	CCDO Document	Report Deleted
	Connection Status Report	Report Deleted
	Daily Renewal Statistics	Report Deleted
	Inventory Adjustment	Report Deleted
	Quick Counter	Report Deleted
	Subcontractor Money	Report Deleted
	Title-In-Process Exception	Report Deleted

### VERSION 5.2.3 ACTIVITY CHANGES FOR COUNTIES

PRIMARY EVENT SELECTION	SECONDARY EVENT SELECTION	ACTIVITY DESCRIPTION	STATUS
<b>CUSTOMER Registration Only</b>	Internet Renewal	<b>Problem:</b> Internet users occasionally change the county after a vehicle was already in the shopping cart. Instead of answering the "You changed county" question they press the browser back button to select another county. This caused the county change to be unrecognized, and the user could unknowingly place a vehicle in 2 different counties.	<b>Fix completed:</b> The internet registration process now recognizes a county change only after the "You changed county" message is answered, confirming the county change.
	Internet Renewal – Process New	<b>Problem:</b> Processing internet renewals at the county on the Vehicle Information and Processing screen (REG103) the cursor defaults to view insurance when you first enter the screen but after you process one transaction it now goes to continue.	<b>Fix completed:</b> After processing an internet renewal the focus starts back on the insurance button.
	Internet –Renewal – Process Hold	<b>Problem:</b> Multiple cursors appeared on screen.	<b>Fix completed:</b> Only one cursor now appears.
	Internet Renewal Search	<b>Problem:</b> Numbers were not allowed in the Name Search fields.	<b>Fix completed:</b> Numbers are included in Name Search fields.
		<b>Problem:</b> Occasionally, when searching the Search Results might not show what was intended.	<b>Fix completed:</b> The Search Results screen now display the current search results after returning to the screen.
	Internet Purge	<b>Problem:</b> Internet records were being purged before all fees had been collected.	<b>Fix completed:</b> Records will not be purged until all fees are collected.
	Internet Renewal County Processing	<b>Problem:</b> When typing in the Comment Box if a hot key was pressed it was incorrectly activated.	<b>Fix completed:</b> All hot keys now must be selected with the Ctrl key (i.e. Ctrl + T).

PRIMARY EVENT SELECTION	SECONDARY EVENT SELECTION	ACTIVITY DESCRIPTION	STATUS
Registration Only cont'd...	Internet Renewal County Processing Of Declines	<p><b>Problem:</b> The Comptroller's Office has requested that Epay prevent the use of an individual trace number more than once. Duplicate trace numbers now make it difficult for them to perform reconciliation and audits. Note: TxOnline vehicle registration, batch failed refund and failed payment processing, county processing of declines</p>	<p><b>Fix completed:</b> The new capture trace number format will then be CCCVRPPPPPP12AB@RR then A or R. 1. "CCC" is the 3 digit county number. 2. "VR" (Vehicle Registration) stays the same. 3. "PPPPPP" is the plate number. 4. "12AB" are 4 randomly generated characters. 5. "@" is a new character added to all captures. 6. "RR" are 2 more randomly generated characters. 7. "A" (Approved) or "R" (Refund) remains the same.</p>
	Internet Registration and Address Change	<p><b>Problem:</b> Modern web sites will usually present an icon of their choosing next to their URL when someone hits their web page. The default browser icon was displaying next to the URL.</p>	<p><b>Fix completed:</b> The TxDOT logo icon is now seen next to the URL when processing Address Change or Registration Renewal on the internet.</p>
	Renewal	<p><b>Problem:</b> When completing a transaction, RTS returns to the Pending Transaction screen if a printing error occurs after the transaction has been processed.</p>	<p><b>Fix completed:</b> An error message will display and the system will now return to the Main Menu.</p>
		<p><b>Problem:</b> When renewing a PLP Combination registration, the Inventory Item Year did not update.</p>	<p><b>Fix completed:</b> Inventory Item Year now updates.</p>
		<p><b>Problem:</b> The escape key was not working on the Miscellaneous Fee screen (PMT002) and Credit screen (PMT003).</p>	<p><b>Fix completed:</b> The escape key now works.</p>
		<p><b>Problem:</b> The Shift + Tab keys do not work on the Inquiry Key Selection screen (KEY001).</p>	<p><b>Fix completed:</b> The Tab and Shift + Tab keys will now follow the tabbing standard for JAVA 1.4.</p>

PRIMARY EVENT SELECTION	SECONDARY EVENT SELECTION	ACTIVITY DESCRIPTION	STATUS
Registration Only cont'd...	Renewal Cont'd...	<b>Problem:</b> The system was not updating the Inventory Item Year for Personalized Combination or Personalized Go Texan Combination.	<b>Fix completed:</b> Customer supplied and issued Personalized Combination and Personalized Go Texan Combination are now assigned an Inventory Item Year consistent with the expiration year of the registration.
	Exchange	<b>Problem:</b> Multiple cursors displayed following an error on the Registration Additional Info screen (REG039).	<b>Fix completed:</b> The cursor focus will now follow the standard for JAVA 1.4.
		<b>Problem:</b> When exchanging a PLP Combination registration, the Inventory Item Year did not update.	<b>Fix completed:</b> Inventory Item Year now updates.
		<b>Problem:</b> When changing from a Regular plate to a Special plate on the Enter Registration Expiration Month/Year screen (REG029), the Customer Supplied field was disabled, although when tabbing the cursor would land on the field.	<b>Fix completed:</b> The Tab key will now follow the tabbing standard for JAVA 1.4.
	Address Change / Print Renewal	<b>Problem:</b> On the Owner Address screen (REG033), once the "Request Renewal Notice" checkbox was checked, escaping did not remove the check.	<b>Fix completed:</b> The checkbox is now cleared when you escape and return to the REG033 screen.
	Subcontractor Renewal	<b>Problem:</b> The Shift + Tab keys do not work on the Subcontractor Entry screen (REG006).	<b>Fix completed:</b> The Tab and Shift + Tab keys will now follow the tabbing standard for JAVA 1.4.
		<b>Problem:</b> Fields in error are red, but cursor is on a different field on the Registration Subcontractor Renewal screen (REG007).	<b>Fix completed:</b> The cursor focus will now follow the standard for JAVA 1.4.
		<b>Problem:</b> The user was unable to access all hotkeys (Alt + 'Key') on the Subcontractor Renewal screen (REG007).	<b>Fix completed:</b> The hotkeys (Alt + 'Key') on screen REG007 now all work correctly.

PRIMARY EVENT SELECTION	SECONDARY EVENT SELECTION	ACTIVITY DESCRIPTION	STATUS
Registration Only cont'd...	Subcontractor Renewal Cont'd...	<b>Problem:</b> Multiple cursors displayed following an error on the Registration Subcontractor Renewal screen (REG007).	<b>Fix completed:</b> The cursor focus will now follow the standard for JAVA 1.4.
	Inquiry Key Selection – KEY001	<b>Problem:</b> Some entry fields were enabled after Same Vehicle was selected.	<b>Fix completed:</b> When Same Vehicle is selected, the system will clear and disable entry fields.
<b>CUSTOMER</b>  Title / Registration	Title Application - Original	<b>Problem:</b> When titling and renewing a PLP Combination registration, the Inventory Item Year did not update.	<b>Fix completed:</b> Inventory Item Year now updates.
		<b>Problem:</b> On the Sales Tax screen (TTL012), the system was allowing negative numbers in entry fields.	<b>Fix completed:</b> Sales Tax screen will only accept zero and positive numbers where a dollar is entered.
	Title Application - Mainframe Unavailable	<b>Problem:</b> When unable to retrieve, an error occurred while attempting to proceed past the Fees Due Screen (PMT004).	<b>Fix completed:</b> A corrected title can now be completed when record retrieval is down.
		<b>Problem:</b> Solid Tire was not a correct selection when the mainframe was unavailable.	<b>Fix complete:</b> Solid Tire can now be selected correctly when the mainframe is unavailable.
	VIN Key Selection – KEY006	<b>Problem:</b> Some entry fields were enabled after Same Vehicle or No VIN was selected.	<b>Fix completed:</b> When Same Vehicle or No VIN is selected, the system will clear and disable entry fields.
	Dealer Title Application	<b>Problem:</b> If an invalid Form 31 number was entered and the error message cleared, the cursor was focused on the Enter key on the keyboard DTA008 screen.	<b>Fix completed:</b> The cursor is now focused on the Form 31 No field.
		<b>Problem:</b> The previous city name field did not match the owner city length.	<b>Fix completed:</b> The field has been lengthened to 11 characters allowing the display of the entire previous owner city.
		<b>Problem:</b> New Plates Desired check box on the Title Additional Info screen (TTL008) did not default appropriately for plate code changes.	<b>Fix completed:</b> If the Registration Plate Code differs from the original, then set New Plates Desired to checked and disabled.



PRIMARY EVENT SELECTION	SECONDARY EVENT SELECTION	ACTIVITY DESCRIPTION	STATUS
Title / Registration cont'd...	Dealer Title Application cont'd...	<b>Problem:</b> DTA was using the RTS system date to determine if registration exceeds 3-month registration window.	<b>Fix completed:</b> DTA now uses the Dealer Trans Date for all processing of registration validation including calculating the 3-month registration window.
		<b>Problem:</b> When changing the Form 31 number from the dealer diskette the new form number was not reflected on the Dealer Completed Report.	<b>Fix completed:</b> The new Form 31 number will now be recorded on the Dealer Completed Report.
		<b>Problem:</b> When processing a DTA diskette that is empty, the application returns to Main Menu but should go to the Copy Failure screen (DTA005).	If the DTA diskette contains the file DLRTITLE.DAT but the file is empty, the "Copy Failure DTA005" screen will display.
		<b>Problem:</b> DTA event not completing if the diskette is removed before processing was completed.	<b>Fix completed:</b> The county clerk must leave the DTA diskette in the A:\ drive until processing is completed and the application has returned to the Main Menu.
		<b>Problem:</b> "NOT ACTUAL MILEAGE" was not displayed in Odometer Brand box when the odometer reading EXEMPT was replaced with a number and the Tab key was selected.	<b>Fix completed:</b> "NOT ACTUAL MILEAGE" will now display.
		<b>Problem:</b> The error message "New registration has been submitted but may not be required for this transaction. The registration is current and not within the renewal window." was displayed when a dealer issued registration on a vehicle with expired registration.	<b>Fix completed:</b> The error message will not display when new registration is issued.
		<b>Problem:</b> On the Lien Display screen (TTL005), when a lienholder had two names and two street addresses, the comma after the lienholder city appeared as period.	<b>Fix completed:</b> The textbox size is increased in size and now displays the comma.

PRIMARY EVENT SELECTION	SECONDARY EVENT SELECTION	ACTIVITY DESCRIPTION	STATUS
<u>CUSTOMER</u>  <b>Inquiry</b>	Vehicle Information	<b>Problem:</b> When selecting an archive record from the Record(s) Found on Cancelled Plate and Archive File screen (CTL005) where multiple archive records were returned, a system error occurred.	<b>Fix completed:</b> The user is now able to select an archive record successfully.
		<b>Problem:</b> The cursor did not default to the "Enter" button on Lien Display screen (TTL005).	<b>Fix completed:</b> The cursor now defaults to the "Enter" button on the Lien Display screen (TTL005).
<u>CUSTOMER</u>  <b>Miscellaneous            Registration</b>	Timed Permits	<b>Problem:</b> MRG006: When selecting Same Vehicle, after specifying no year on a prior transaction, "0" was placed in the year field on the Timed Permit screen (MRG006).	<b>Fix completed:</b> The year field is now left blank.
	Disabled Parking Card	<b>Problem:</b> When two placards are issued - one allocated, the other not allocated - only the allocated placard would appear on the Inventory-Registration Items screen (INV007) and the receipt.	<b>Fix completed:</b> Both placards now appear on the Inventory-Registration Items screen (INV007) and the receipt.
	Temporary Additional Weight	<b>Problem:</b> "Temporary" is misspelled in the gross weight field on the receipt.	<b>Fix completed:</b> Spelling corrected on receipt.
	Non-Resident Agriculture Permit	<b>Problem:</b> On the Non-Resident Agriculture screen (MRG013), the Zip+4 field was not long enough to display all numbers.	<b>Fix completed:</b> The full Zip+4 numbers are now visible.
		<b>Problem:</b> The Shift + Tab keys do not work on the Non-Resident Agriculture screen (MRG013).	<b>Fix completed:</b> The Tab and Shift + Tab keys will now follow the tabbing standard for JAVA 1.4.
	Tow Truck	<b>Problem:</b> Data and Color (if in error) were not removed from Tow Truck Plate No field when Currently Registered was deselected on the Tow Truck screen (MRG004).	<b>Fix completed:</b> Data and Color are cleared when deselected.

PRIMARY EVENT SELECTION	SECONDARY EVENT SELECTION	ACTIVITY DESCRIPTION	STATUS
Misc. Registration Cont'd...	Tow Truck Cont'd...	<b>Problem:</b> “Currently Registered” goes to the ‘Enter registration expiration month / year’ screen (REG029) when processing set registration.	<b>Fix completed:</b> “Currently Registered” bypasses the REG029 screen going directly to Fees Due Screen.
<b><u>MISCELLANEOUS</u></b>	Set Print Destination	<b>Problem:</b> The Shift + Tab keys do not work properly in Print Destination screen (CTL009).	<b>Fix completed:</b> The Tab and Shift + Tab keys throughout the event will now follow the tabbing standard for JAVA 1.4.
		<b>Problem:</b> When selecting a workstation, they were not on order.	<b>Fix completed:</b> Workstation list is now in order by Workstation Id.
<b><u>REPORTS</u></b>	Reprint Reports	<b>Problem:</b> Exit Print Loop and VTR Authorization (SSN) screens both had the number CTL010.	<b>Fix completed:</b> Changed Exit Print Loop screen CTL012.
	Title Package Report	<b>Problem:</b> The Title Package Report screen (RPR003) displayed unsorted Workstation List.	<b>Fix completed:</b> Workstation List is now sorted by workstation Id.
		<b>Problem:</b> Previously, the user could only Shift + Tab between the table and Enter button.	<b>Fix completed:</b> The Tab and Shift + Tab keys will now follow the tabbing standard for JAVA 1.4.
		<b>Problem:</b> Validation was not being performed in screen flow order.	<b>Fix completed:</b> Validation is now performed in screen flow order.
<b><u>LOCAL OPTIONS</u></b>	Dealer Report	<b>Problem:</b> Phone number was not formatted as (###) ###-#### on Dealer Report.	<b>Fix completed:</b> Dealer Report phone number is now correctly formatted.
	RSPS Status Updates	<b>Problem:</b> The letter “R” was the hot key used to launch RSPS Status Updates from the Local Options Menu.	<b>Fix completed:</b> The letter “U” will now be the hot key used to launch RSPS Status Updates from the Local Options Menu.
<b><u>ACCOUNTING</u></b>	Funds Inquiry	<b>Problem:</b> When escaping to the Funds Key Selection screen (KEY021), the Payment Date disappeared after pressing the Shift key.	<b>Fix completed:</b> The Tab key will now follow the tabbing standard for JAVA 1.4.
<b><u>INVENTORY</u></b>	Allocate	<b>Problem:</b> The screen number for Inventory - Allocation Summary and Item Number Not Found screens were both INV014.	<b>Fix completed:</b> The Item Number Not Found screen is now INV003.

PRIMARY EVENT SELECTION	SECONDARY EVENT SELECTION	ACTIVITY DESCRIPTION	STATUS
Inventory Cont'd...	Allocate Cont'd...	<b>Problem:</b> When receiving or allocating truck plates, the system calculations of the end number and quantity give two different answers.	<b>Fix completed:</b> Calculations used to process this particular inventory range are now correct.
	Inventory Allocate Report	<b>Problem:</b> There was insufficient space in the From / To field.	<b>Fix completed:</b> Made field lengths longer.
	Receive Invoice	<b>Problem:</b> The Modify Item On Invoice and Inventory History County screens both had displayed number INV015.	<b>Fix completed:</b> Modify Item On Invoice now has screen number INV028.
		<b>Problem:</b> Previously, the cursor did not go automatically to the Invoice No. field on the Inventory-Receive Invoice screen (INV004).	<b>Fix completed:</b> The cursor moves directly to the Invoice No. entry field, regardless of any radio button selection.
		<b>Problem:</b> There was no space limit when typing in text on the Modify Invoice screen (INV002).	<b>Fix completed:</b> Set the space limit to 120 to replicate limits allowed on the Inventory Received Report.
	Inventory Inquiry	<b>Problem:</b> A system error occurred when a Current Balance Report page filled up and moved to the next page, the system used the code for history to determine headings for the report.	<b>Fix completed:</b> Verification was added to determine which type of data is being used to generate the column headings.
	Inventory Profile	<b>Problem:</b> The Tab and Shift + Tab keys did not move to all fields on the Inventory Profile screen (INV016).	<b>Fix completed:</b> The Tab and Shift + Tab keys will now follow the tabbing standard for JAVA 1.4.
	Inventory Action Report	<b>Problem:</b> The Inventory Action Report Date Selection and the Inventory Inquiry Selection both had screen number INV020.	<b>Fix completed:</b> The Inventory Action Report Data Selection screen number is now INV019.
<b>FUNDS</b>	Current Status	<b>Problem:</b> The Shift + Tab keys do not work correctly on Cash Drawer Selection screen (FUN001).	<b>Fix completed:</b> The Tab and Shift + Tab keys will now follow the tabbing standard for JAVA 1.4.
		<b>Problem:</b> The Shift + Tab keys do not work correctly on Report Selection screen (FUN007).	<b>Fix completed:</b> The Tab and Shift + Tab keys will now follow the tabbing standard for JAVA 1.4.

PRIMARY EVENT SELECTION	SECONDARY EVENT SELECTION	ACTIVITY DESCRIPTION	STATUS
Funds Cont'd...	Rerun Substation Summary	<b>Problem:</b> Previous error message 684 read 'THERE ARE NO NEW CLOSE OUTS. THE SUBSTATION SUMMARY WILL NOT RUN.'	<b>Fix completed:</b> Current error message 684 was updated to read 'THERE ARE NO NEW CLOSEOUTS. THE SUBSTATION SUMMARY WILL NOT RUN.'
	Close Out for the Day	<b>Problem:</b> The Shift + Tab keys do not work correctly on Close Out Confirmation screen (FUN002).	<b>Fix completed:</b> The Tab and Shift + Tab keys will now follow the tabbing standard for JAVA 1.4.
		<b>Problem:</b> Previous error message 694 read 'THE CLOSE OUT INDICATOR IS ALREADY OFF. NO ACTION IS REQUIRED.'	<b>Fix completed:</b> Current error message 694 was updated to read 'THE CLOSEOUT INDICATOR IS ALREADY OFF. NO ACTION IS REQUIRED.'
		<b>Problem:</b> Previous error message 226 read 'RTS IS DOWN. (CUSTSEQ.DAT FILE CANNOT BE RECREATED BY P447101.AM.)'.	<b>Fix completed:</b> Current error message 226 was updated to read 'RTS IS DOWN. (CUSTSEQ.DAT FILE CANNOT BE RECREATED.)'
	Close Out Status	<b>Problem:</b> The shift + tab keys go only to the ENTER button and table on the Close Out Status screen (FUN015).	<b>Fix completed:</b> The Tab and Shift + Tab keys will now follow the tabbing standard for JAVA 1.4.
<b><u>GLOBAL</u></b>	Client Batch	<b>Problem:</b> In some cases, the Batch Inventory Action Report (BIAR) was found to be running after 7:00 a.m.	<b>Fix completed:</b> BIAR no longer runs in batch after 7:00 a.m.
	Preview Report	<b>Problem:</b> The Preview screen would shrink before printing the document when the document contained multiple pages.	<b>Fix completed:</b> The preview screen no longer shrinks.

### VERSION 5.2.3 ACTIVITY CHANGES FOR HEADQUARTERS/REGIONS

PRIMARY EVENT SELECTION	SECONDARY EVENT SELECTION	ACTIVITY DESCRIPTION	STATUS
<b><u>CUSTOMER</u></b>  Registration Only	Issue Driver Education Plate	<b>Problem:</b> The Registration Only menu item, the verbiage on the event header and Security Access Rights – Registration screen (SEC006) had different variations on the 'Issue Driver Education Plate' theme.	<b>Fix completed:</b> The Registration Only menu item, the verbiage on the event header and Security Access Rights – Registration screen (SEC006) now read 'Issue Driver Education Plate'.
<b><u>CUSTOMER</u></b>  Title / Registration	CCO Regional Offices	<b>Problem:</b> When canceling off the CCO screen (TTL018), if the selected record pulled was archived and had a canceled plate, the user was unable to process another CCO from the Inquiry Key Selection screen (KEY001). A system error appeared.	<b>Fix completed:</b> The user is now able to complete a transaction.
	COA Headquarters Only	<b>Problem:</b> When completing a COA, the initial cursor focus is placed on the Enter key when coming back to the Inquiry Key Selection screen (KEY06).	<b>Fix completed:</b> The cursor focus will now follow the standard for JAVA 1.4.
	Salvage / COA Headquarters Only	<b>Problem:</b> Changes needed in the Salvage event.	<b>Fix completed:</b> Registration Invalid is set for Salvages / COA, disabled Salvage Certificate button on Salvage screen (TTL016), and now allow Lien entry for initial Salvage transactions (both SVT and NVT).
	Salvage Headquarters Only	<b>Problem:</b> When completing a Salvage title, the initial cursor focus is placed on the Enter key when coming back to the Inquiry Key Selection screen (KEY06).	<b>Fix completed:</b> The cursor focus will now follow the standard for JAVA 1.4.
		<b>Problem:</b> A problem occurred when the user selected Record Not Applicable on the Multiple Records screen (INQ004).	<b>Fix completed:</b> Multiple Records transactions now process without error.
	<b>Problem:</b> Mouse did not work for USA checkbox on the CCO Mailing Info screen (TTL013).	<b>Fix completed:</b> Adjusted focus.	

PRIMARY EVENT SELECTION	SECONDARY EVENT SELECTION	ACTIVITY DESCRIPTION	STATUS
Title / Registration Cont'd...	Salvage Cont'd...	<b>Problem:</b> On the Salvage screen (TTL016) the box around the USA check box was not complete, the "Y" in Year / Make was cut off, and plate was not completely visible in the plate field.	<b>Fix completed:</b> All corrections were completed.
		<b>Problem:</b> A system error appeared when processing a multiple archived transaction with Owner ID.	<b>Fix completed:</b> Updated RTS to properly carry forward the Owner ID in multiple archive record situations.
		<b>Problem:</b> The Salvage event did not return to the VIN field on the VIN Key Selection screen (Key006).	<b>Fix complete:</b> The Salvage event will always return to the VIN field on the VIN Key Selection screen (Key006).
<u>CUSTOMER</u>  <b>Inquiry</b>	Vehicle Inquiry Headquarters Only	<b>Problem:</b> When the user searched archive and no record was found, error message 211 "No vehicle record is found. Continue Processing" appeared.	<b>Fix completed:</b> For consistency, error message 57 "No Record Found" now appears and the screen returns to the Main Menu.
<u>CUSTOMER</u>  <b>Local Options</b>	Security	<b>Problem:</b> The Issue Driver Education Plate selection on the Security Access Rights Registration Only screen (SEC006) was not selected / deselected using the space bar.	<b>Fix completed:</b> Issue Driver Education Plate selection now selects / deselects with space bar.
<u>CUSTOMER</u>  <b>Accounting</b>	Regional Collection	<b>Problem:</b> The event did not prevent the user from specifying the same inventory item multiple times in a single transaction.	<b>Fix completed:</b> To ensure that inventory was not previously specified, error message 298 "The Item Number Has Already Been Issued" appears and the system returns to the Inventory-Item Input screen (INV001).
		<b>Problem:</b> Color did not clear from a field in error on the Regional Collection screen (ACC002) after a new selection was made.	<b>Fix completed:</b> Color clears after a new selection.